

## \$496,500 - 9621 Colak Link, Edmonton

MLS® #E4429101

**\$496,500**

3 Bedroom, 2.50 Bathroom, 1,421 sqft  
Single Family on 0.00 Acres

Chappelle Area, Edmonton, AB

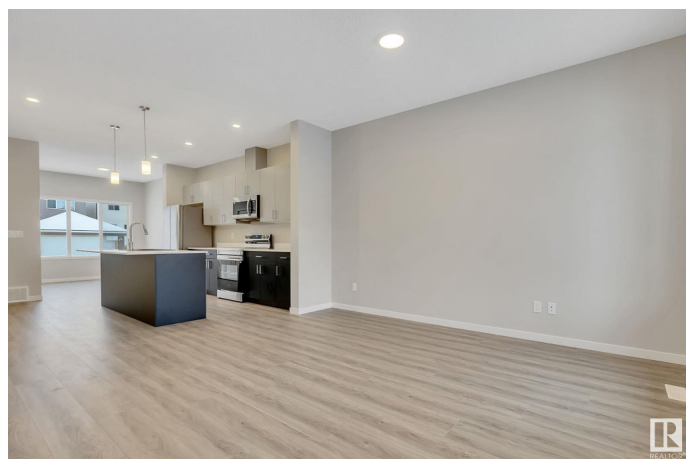
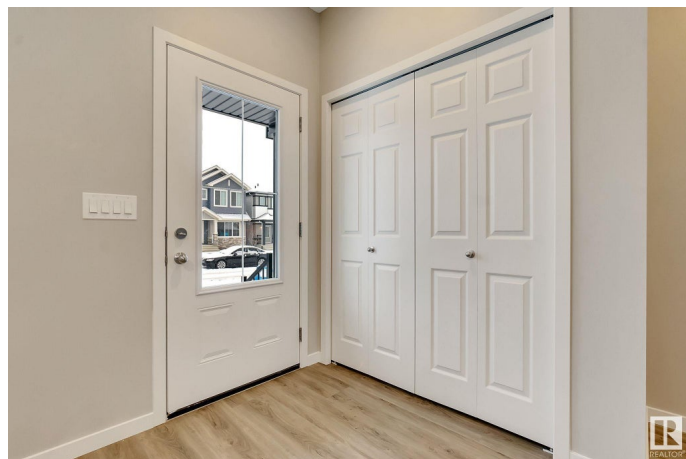
Budget Friendly, Brand New Home in Chappelle – Ideal Location & Modern Features! Welcome to this beautifully designed 3-bedroom, 2.5-bathroom detached home in the sought-after community of Chappelle, SW Edmonton. This modern home offers a separate side entrance, making it an excellent opportunity for future development. On entrance, You step inside to a bright and inviting main floor, featuring a spacious living room, a well-appointed kitchen with stainless steel appliances, and a dining area perfect for family gatherings. Upstairs, you'll find a convenient upper-floor laundry, three generous bedrooms, and a versatile bonus room – ideal for a home office or play area. The primary bedroom boasts an ensuite bath, providing a private retreat and walk-in closet. Located in a family-friendly neighborhood, this home is within close proximity to schools, shopping plazas, walking trails, and transit, offering the perfect balance of comfort and convenience. Don't miss out on this fantastic opportunity!

Built in 2024

### Essential Information

MLS® # E4429101

Price \$496,500



Bedrooms	3
Bathrooms	2.50
Full Baths	2
Half Baths	1
Square Footage	1,421
Acres	0.00
Year Built	2024
Type	Single Family
Sub-Type	Detached Single Family
Style	2 Storey
Status	Active

### **Community Information**

Address	9621 Colak Link
Area	Edmonton
Subdivision	Chappelle Area
City	Edmonton
County	ALBERTA
Province	AB
Postal Code	T6W 5M5

### **Amenities**

Amenities	Ceiling 9 ft., 9 ft. Basement Ceiling
Parking	Parking Pad Cement/Paved, See Remarks

### **Interior**

Interior Features	ensuite bathroom
Appliances	Dishwasher-Built-In, Dryer, Microwave Hood Fan, Refrigerator, Stove-Electric, Washer
Heating	Forced Air-1, Natural Gas
Stories	2
Has Basement	Yes
Basement	Full, Unfinished

### **Exterior**

Exterior	Wood, Stone, Vinyl
Exterior Features	Playground Nearby, Public Transportation, Schools, Shopping Nearby
Roof	Asphalt Shingles
Construction	Wood, Stone, Vinyl

Foundation            Concrete Perimeter

### **Additional Information**

Date Listed            April 4th, 2025

Days on Market      15

Zoning                 Zone 55

DATA IS DEEMED RELIABLE BUT IS NOT GUARANTEED ACCURATE BY THE REALTORS® ASSOCIATION OF EDMONTON. COPYRIGHT 2025 BY THE REALTORS® ASSOCIATION OF EDMONTON. ALL RIGHTS RESERVED. Trademarks are owned or controlled by the Canadian Real Estate Association (CREA) and identify real estate professionals who are members of CREA (REALTOR®, REALTORS®) and/or the quality of services they provide (MLS®, Multiple Listing Service®)

Listing information last updated on April 19th, 2025 at 1:47am MDT