

Courtesy Of Adrienne Carlton Of Exp Realty

## \$569,000 - 442 Breckenridge Lane, Edmonton

MLS® #E4428123

**\$569,000**

4 Bedroom, 3.50 Bathroom, 1,850 sqft  
Single Family on 0.00 Acres

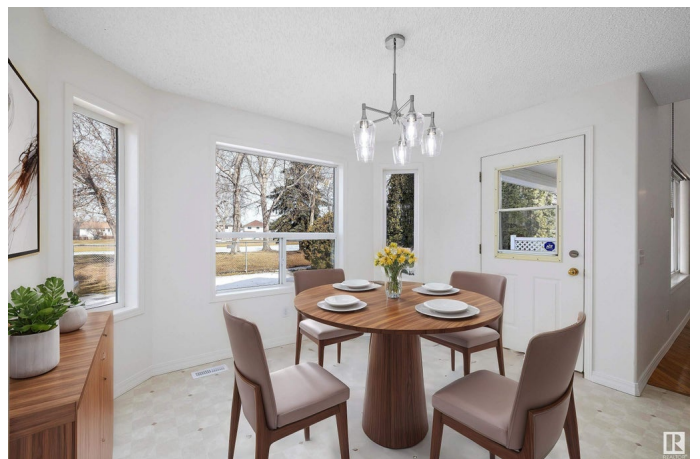
Breckenridge Greens, Edmonton, AB

Location, location, location! Welcome to this fully finished, 2-story home, backing onto the 15th fairway of Lewis Estates Golf Course. Enjoy the lovely green views with no neighbours behind you! Fresh paint on the main/upper level, with new appliances, furnace, and hot water tank. offering 3 bdrms & an office above grade, & 1 bdrm below grade. The main level offers an open concept with popular open-to-below upper level. Enjoy the vaulted ceiling in the living room, giving it a grand feel with a light airy ambiance. The popular great room concept features a main floor den and laundry for added convenience. Enjoy the spacious feel with 36" interior doorways and energy-efficient "Solar Shield" windows. The ensuite boasts a relaxing Jacuzzi tub, and primary has large w/i closet with laundry shoot. Large family room in bsmnt, with 3 pc bath and storage room. Just a couple min drive to the main shopping area and Anthony Henday, you couldn't ask for a more perfect location for this move in ready home!

Built in 1997

### Essential Information

|        |           |
|--------|-----------|
| MLS® # | E4428123  |
| Price  | \$569,000 |



|                |                        |
|----------------|------------------------|
| Bedrooms       | 4                      |
| Bathrooms      | 3.50                   |
| Full Baths     | 3                      |
| Half Baths     | 1                      |
| Square Footage | 1,850                  |
| Acres          | 0.00                   |
| Year Built     | 1997                   |
| Type           | Single Family          |
| Sub-Type       | Detached Single Family |
| Style          | 2 Storey               |
| Status         | Active                 |

### **Community Information**

|             |                       |
|-------------|-----------------------|
| Address     | 442 Breckenridge Lane |
| Area        | Edmonton              |
| Subdivision | Breckenridge Greens   |
| City        | Edmonton              |
| County      | ALBERTA               |
| Province    | AB                    |
| Postal Code | T5T 6E2               |

### **Amenities**

|           |   |
|-----------|---|
| Amenities | Closet Organizers, Deck, Detectors Smoke, Exterior Walls- 2"x6", Hot Tub, No Smoking Home, Vaulted Ceiling, See Remarks |
| Parking   | Double Garage Attached  |

### **Interior**

|                   |  |
|-------------------|--|
| Interior Features | ensuite bathroom   |
| Appliances        | Dishwasher-Built-In, Dryer, Fan-Ceiling, Microwave Hood Fan, Refrigerator, Storage Shed, Stove-Gas, Washer |
| Heating           | Forced Air-1, Natural Gas  |
| Fireplace         | Yes  |
| Fireplaces        | Mantel   |
| Stories           | 3  |
| Has Basement      | Yes  |
| Basement          | Full, Finished   |

### **Exterior**

|          |                    |
|----------|--------------------|
| Exterior | Wood, Brick, Vinyl |
|----------|--------------------|

|                   |  |
|-------------------|--|
| Exterior Features | Backs Onto Park/Trees, Cul-De-Sac, Fenced, Fruit Trees/Shrubs, Golf Nearby |
| Roof              | Asphalt Shingles   |
| Construction      | Wood, Brick, Vinyl   |
| Foundation        | Slab   |

### **Additional Information**

Date Listed            March 28th, 2025

Days on Market      5

Zoning                Zone 58

DATA IS DEEMED RELIABLE BUT IS NOT GUARANTEED ACCURATE BY THE REALTORS® ASSOCIATION OF EDMONTON. COPYRIGHT 2025 BY THE REALTORS® ASSOCIATION OF EDMONTON. ALL RIGHTS RESERVED. Trademarks are owned or controlled by the Canadian Real Estate Association (CREA) and identify real estate professionals who are members of CREA (REALTOR®, REALTORS®) and/or the quality of services they provide (MLS®, Multiple Listing Service®)

Listing information last updated on April 2nd, 2025 at 5:22am MDT