

\$509,700 - 52 Chelsea Way, Sherwood Park

MLS® #E4425880

\$509,700

4 Bedroom, 3.00 Bathroom, 1,766 sqft
Single Family on 0.00 Acres

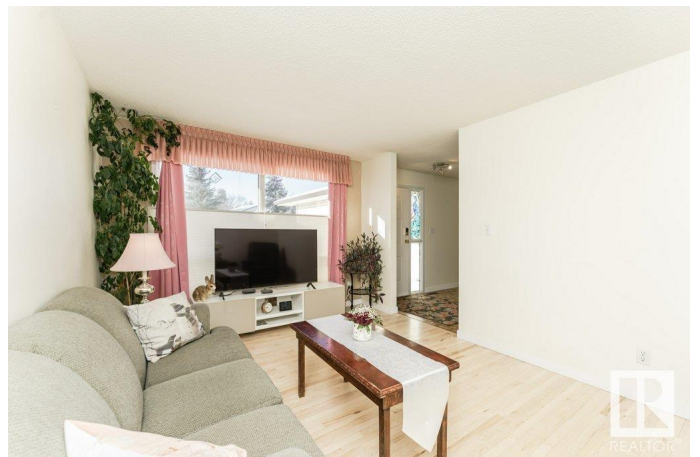
Chelsea Heights, Sherwood Park, AB

Location! Location ! Location! Fantastic Family location in Chelsea Heights backing onto walkway and greenbelt. Entering this home you will find refurbished hardwood floors in front living room. Cross the hall Dining room or flex room for the modern family. Kitchen features Granicrete countertops and plenty of cabinetry along with patio doors leading to deck with Gazebo and Hot Tub ! Coffee Bar area in kitchen overlooks the main floor family room with Hardwood floors and Woodburning Fireplace. 2 piece powder room and entry to Att'd Dble garage complete the main floor. Upstairs you will be treated to CORK flooring and the primary bedroom has a walk-in closet along with a 3 pce ensuite. Two additional bedrooms and a full bath finish the upper level. Basement is partially developed with an office area - Storage areas , 2 piece bath with RI for future shower and laundry area (there is also laundry in 2nd Bdrm on upper floor). Outside you will find a massive Deck-Gazebo - Hot Tub - Sheds Dog Run and more!

Built in 1990

Essential Information

| | |
|----------|-----------|
| MLS® # | E4425880 |
| Price | \$509,700 |
| Bedrooms | 4 |



| | |
|----------------|------------------------|
| Bathrooms | 3.00 |
| Full Baths | 2 |
| Half Baths | 2 |
| Square Footage | 1,766 |
| Acres | 0.00 |
| Year Built | 1990 |
| Type | Single Family |
| Sub-Type | Detached Single Family |
| Style | 2 Storey |
| Status | Active |

Community Information

| | |
|-------------|-----------------|
| Address | 52 Chelsea Way |
| Area | Sherwood Park |
| Subdivision | Chelsea Heights |
| City | Sherwood Park |
| County | ALBERTA |
| Province | AB |
| Postal Code | T8H 1E3 |

Amenities

| | |
|-----------|---|
| Amenities | Air Conditioner, Deck, Exterior Walls- 2"x6", Gazebo, Hot Tub |
| Parking | Double Garage Attached |

Interior

| | |
|-------------------|---|
| Interior Features | ensuite bathroom |
| Appliances | Air Conditioning-Central, Alarm/Security System, Dishwasher-Built-In, Dryer, Garage Control, Garage Opener, Oven-Microwave, Refrigerator, Storage Shed, Stove-Electric, Vacuum System Attachments, Washer, Window Coverings, TV Wall Mount, Hot Tub |
| Heating | Forced Air-1, Natural Gas |
| Fireplace | Yes |
| Fireplaces | Mantel |
| Stories | 2 |
| Has Basement | Yes |
| Basement | Full, Partially Finished |

Exterior

| | |
|----------|-------------|
| Exterior | Wood, Vinyl |
|----------|-------------|

| | |
|-------------------|----------------------------------|
| Exterior Features | Fenced, Landscaped, Park/Reserve |
| Roof | Asphalt Shingles |
| Construction | Wood, Vinyl |
| Foundation | Concrete Perimeter |

Additional Information

| | |
|-------------|------------------|
| Date Listed | March 14th, 2025 |
|-------------|------------------|

| | |
|----------------|----|
| Days on Market | 20 |
|----------------|----|

| | |
|--------|---------|
| Zoning | Zone 25 |
|--------|---------|

DATA IS DEEMED RELIABLE BUT IS NOT GUARANTEED ACCURATE BY THE REALTORS® ASSOCIATION OF EDMONTON. COPYRIGHT 2025 BY THE REALTORS® ASSOCIATION OF EDMONTON. ALL RIGHTS RESERVED. Trademarks are owned or controlled by the Canadian Real Estate Association (CREA) and identify real estate professionals who are members of CREA (REALTOR®, REALTORS®) and/or the quality of services they provide (MLS®, Multiple Listing Service®)

Listing information last updated on April 3rd, 2025 at 9:02pm MDT