

# \$359,900 - 511 10728 82 Avenue, Edmonton

MLS® #E4423802

**\$359,900**

2 Bedroom, 1.50 Bathroom, 1,127 sqft  
Condo / Townhouse on 0.00 Acres

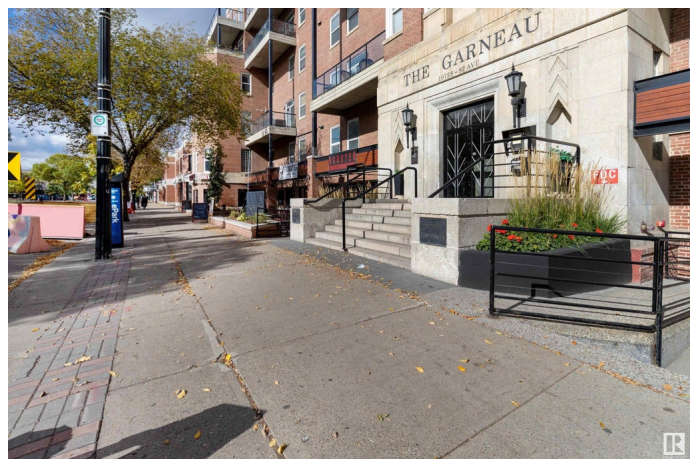
Garneau, Edmonton, AB

This stunning two-level penthouse in the iconic "The Garneau" offers a blend of luxury and style in the heart of Whyte Avenue. Recently upgraded, the unit features plush carpets, elegant hardwood flooring, a spacious island kitchen with quartz countertops, and high-end appliances. The main area boasts exposed brick walls and a gas fireplace, perfect for relaxing or entertaining. A curved staircase leads to the loft, where you'll find two bedrooms and a four-piece bathroom. Enjoy two south-facing balconies with panoramic views of Whyte Avenue. The unit includes two titled underground parking stalls, and the building itself features a gorgeous retro-style lobby. Located steps away from restaurants, entertainment, and the University of Alberta, this penthouse offers convenience and vibrant urban living at its best.

Built in 1948

## Essential Information

MLS® #	E4423802
Price	\$359,900
Bedrooms	2
Bathrooms	1.50
Full Baths	1
Half Baths	1
Square Footage	1,127



Acres	0.00
Year Built	1948
Type	Condo / Townhouse
Sub-Type	Lowrise Apartment
Style	Multi Level Apartment
Status	Active

### **Community Information**

Address	511 10728 82 Avenue
Area	Edmonton
Subdivision	Garneau
City	Edmonton
County	ALBERTA
Province	AB
Postal Code	T6E 6P5

### **Amenities**

Amenities	Deck
Parking Spaces	2
Parking	Underground

### **Interior**

Interior Features	ensuite bathroom
Appliances	Dishwasher-Built-In, Dryer, Oven-Built-In, Oven-Microwave, Refrigerator, Stove-Electric, Washer
Heating	Forced Air-1, Natural Gas
# of Stories	5
Stories	5
Has Basement	Yes
Basement	None, No Basement

### **Exterior**

Exterior	Brick, Stucco
Exterior Features	Shopping Nearby, View City
Roof	Tar & Gravel
Construction	Brick, Stucco
Foundation	Concrete Perimeter

### **Additional Information**

Date Listed	March 4th, 2025
Days on Market	31
Zoning	Zone 15
Condo Fee	\$675

DATA IS DEEMED RELIABLE BUT IS NOT GUARANTEED ACCURATE BY THE REALTORS® ASSOCIATION OF EDMONTON. COPYRIGHT 2025 BY THE REALTORS® ASSOCIATION OF EDMONTON. ALL RIGHTS RESERVED. Trademarks are owned or controlled by the Canadian Real Estate Association (CREA) and identify real estate professionals who are members of CREA (REALTOR®, REALTORS®) and/or the quality of services they provide (MLS®, Multiple Listing Service®)

Listing information last updated on April 3rd, 2025 at 11:02pm MDT