

\$564,900 - 22119 89 Avenue, Edmonton

MLS® #E4423345

\$564,900

4 Bedroom, 3.50 Bathroom, 1,516 sqft
Single Family on 0.00 Acres

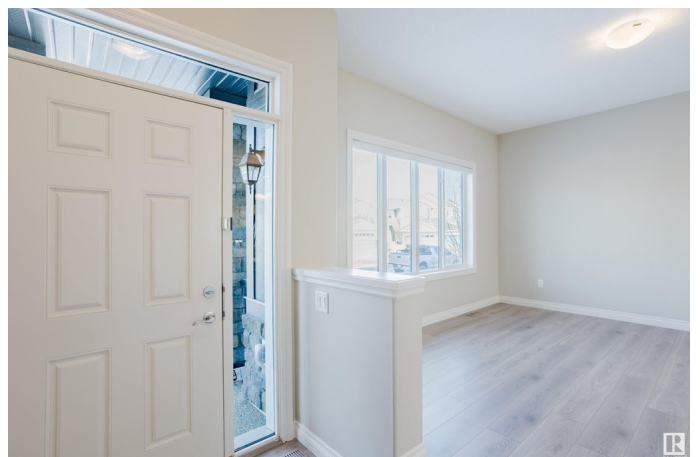
Rosenthal (Edmonton), Edmonton, AB

Looking for a bright, modern home in a prime West Edmonton location? This stunning Rosenthal property offers excellent curb appeal and a functional layout, just minutes from Rosenthal Park, Lewis Estates Golf Course, Costco, and other key West Edmonton amenities. Step inside to a professionally cleaned, sun-filled main floor featuring an open-concept layout, spacious living area, modern kitchen with a pantry, a mudroom leading to a detached double garage, laundry, and a convenient 2pc bath. Upstairs, you'll find three bedrooms, a 4pc bath, and a primary 4pc ensuite. The 1-bedroom legal basement suite has a separate entrance, its own 4pc bath, and in-suite laundry. With street parking available and a sought-after location, this is an excellent opportunity in West Edmonton!

Built in 2017

Essential Information

MLS® #	E4423345
Price	\$564,900
Bedrooms	4
Bathrooms	3.50
Full Baths	3
Half Baths	1
Square Footage	1,516



Acres	0.00
Year Built	2017
Type	Single Family
Sub-Type	Detached Single Family
Style	2 Storey
Status	Active

Community Information

Address	22119 89 Avenue
Area	Edmonton
Subdivision	Rosenthal (Edmonton)
City	Edmonton
County	ALBERTA
Province	AB
Postal Code	T5T 7G9

Amenities

Amenities	On Street Parking, No Smoking Home, Walk-up Basement, See Remarks
Parking Spaces	4
Parking	Double Garage Detached

Interior

Interior Features	ensuite bathroom
Appliances	Hood Fan, Dryer-Two, Refrigerators-Two, Stoves-Two, Washers-Two
Heating	Forced Air-2, Natural Gas
Stories	3
Has Basement	Yes
Basement	Full, Finished

Exterior

Exterior	Wood, Brick, Vinyl, See Remarks
Exterior Features	Fenced, Golf Nearby, Playground Nearby, Schools, See Remarks
Roof	Asphalt Shingles
Construction	Wood, Brick, Vinyl, See Remarks
Foundation	Concrete Perimeter

Additional Information

Date Listed	February 28th, 2025
-------------	---------------------

Days on Market 42

Zoning Zone 58

DATA IS DEEMED RELIABLE BUT IS NOT GUARANTEED ACCURATE BY THE REALTORS® ASSOCIATION OF EDMONTON. COPYRIGHT 2025 BY THE REALTORS® ASSOCIATION OF EDMONTON. ALL RIGHTS RESERVED. Trademarks are owned or controlled by the Canadian Real Estate Association (CREA) and identify real estate professionals who are members of CREA (REALTOR®, REALTORS®) and/or the quality of services they provide (MLS®, Multiple Listing Service®)

Listing information last updated on April 11th, 2025 at 9:02pm MDT