

\$157,500 - 4622 55 Avenue, Wetaskiwin

MLS® #E4423161

\$157,500

0 Bedroom, 0.00 Bathroom,
Land Commercial on 0.00 Acres

Recline, Wetaskiwin, AB

130' x 60' vacant lot in Wetaskiwin! Can build a single family home OR up to a 4plex with 4 legal basement suites. Preliminary plans for a 6plex available. Comes with topographic survey.



Essential Information

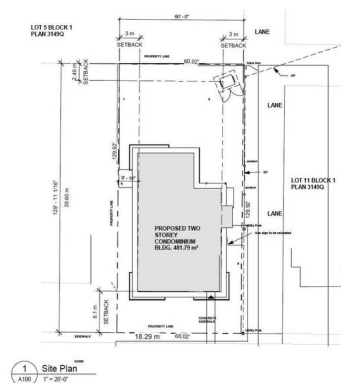
MLS® # E4423161
 Price \$157,500
 Bathrooms 0.00
 Acres 0.00
 Type Land Commercial
 Status Active

Community Information

Address 4622 55 Avenue
 Area Wetaskiwin
 Subdivision Recline
 City Wetaskiwin
 County ALBERTA
 Province AB
 Postal Code T9A 1A2

Additional Information

Date Listed February 27th, 2025
 Days on Market 35
 Zoning Zone 80



Area Schedule (Gross Building)				
Unit	Name	Level	Area	Area m ²
101	TWO BEDROOM UNIT	MAIN FLOOR	961 SF	89.30 m ²
102	ONE BEDROOM UNIT	MAIN FLOOR	650 SF	60.37 m ²
103	ONE BEDROOM UNIT	MAIN FLOOR	650 SF	60.37 m ²
201	TWO BEDROOM UNIT	2ND FLOOR	1,200 SF	111.48 m ²
202	ONE BEDROOM UNIT	2ND FLOOR	650 SF	60.37 m ²
203	ONE BEDROOM UNIT	2ND FLOOR	650 SF	60.37 m ²
			4,561 SF	425.59 m ²

1 Site Plan
 A100
 1"=32'-0"

CONCEPT DRAWING - NOT FOR CONSTRUCTION

DATA IS DEEMED RELIABLE BUT IS NOT GUARANTEED ACCURATE BY THE REALTORS® ASSOCIATION OF EDMONTON. COPYRIGHT 2025 BY THE REALTORS® ASSOCIATION OF EDMONTON. ALL RIGHTS RESERVED. Trademarks are owned or controlled by the Canadian Real Estate Association (CREA) and identify real estate professionals who are members of CREA (REALTOR®, REALTORS®) and/or the quality of services they provide (MLS®, Multiple Listing Service®)

Listing information last updated on April 3rd, 2025 at 6:32pm MDT