

Courtesy Of Craig E Finnman Of RE/MAX Elite

\$550,000 - 30 Hawthorne Crescent, St. Albert

MLS® #E4422482

\$550,000

3 Bedroom, 2.50 Bathroom, 1,629 sqft
Single Family on 0.00 Acres

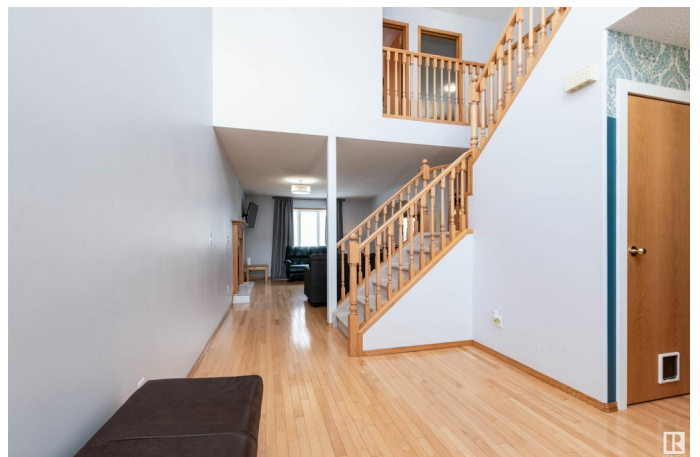
Heritage Lakes, St. Albert, AB

This well-maintained 1,700 sq. ft. 2-storey in Heritage Lakes offers the perfect blend of comfort and style! With 3 spacious bedrooms, an open floor plan, and tons of natural light, this home is ideal for families. Step inside to a large entryway leading to a bright living space with hardwood flooring, vinyl windows, and a cathedral ceiling. The colonial-style kitchen overlooks the dining area, creating a great flow for entertaining. Upstairs, the primary suite features a walk-in closet and 3-piece ensuite, plus two more spacious bedrooms. The basement includes a large rec/playroom, a bonus room perfect for a home office, roughed-in plumbing for a bathroom, and plenty of storage. Outside, enjoy the huge deck with a pergola, a fenced yard, and a hot tub. Plus, air conditioning keeps you cool all summer! Located near the Anthony Henday, this home is a must-see!

Built in 1997

Essential Information

MLS® #	E4422482
Price	\$550,000
Bedrooms	3
Bathrooms	2.50
Full Baths	2
Half Baths	1



Square Footage	1,629
Acres	0.00
Year Built	1997
Type	Single Family
Sub-Type	Detached Single Family
Style	2 Storey
Status	Active

Community Information

Address	30 Hawthorne Crescent
Area	St. Albert
Subdivision	Heritage Lakes
City	St. Albert
County	ALBERTA
Province	AB
Postal Code	T8N 6N5

Amenities

Amenities	Closet Organizers, Deck, Detectors Smoke, Hot Tub, No Animal Home, No Smoking Home, Vinyl Windows
Parking	Double Garage Attached

Interior

Interior Features	ensuite bathroom
Appliances	Air Conditioning-Central, Dishwasher-Built-In, Dryer, Hood Fan, Refrigerator, Stove-Gas, Vacuum System Attachments, Vacuum Systems, Washer, Window Coverings, See Remarks, Hot Tub
Heating	Forced Air-1, Natural Gas
Stories	3
Has Basement	Yes
Basement	Full, Partially Finished

Exterior

Exterior	Wood, Vinyl
Exterior Features	Fenced, Park/Reserve, Schools, Shopping Nearby
Roof	Asphalt Shingles
Construction	Wood, Vinyl
Foundation	Concrete Perimeter

Additional Information

Date Listed February 21st, 2025

Days on Market 45

Zoning Zone 24

DATA IS DEEMED RELIABLE BUT IS NOT GUARANTEED ACCURATE BY THE REALTORS® ASSOCIATION OF EDMONTON. COPYRIGHT 2025 BY THE REALTORS® ASSOCIATION OF EDMONTON. ALL RIGHTS RESERVED. Trademarks are owned or controlled by the Canadian Real Estate Association (CREA) and identify real estate professionals who are members of CREA (REALTOR®, REALTORS®) and/or the quality of services they provide (MLS®, Multiple Listing Service®)

Listing information last updated on April 7th, 2025 at 10:47am MDT