

\$279,000 - 12839 58 Street, Edmonton

MLS® #E4419723

\$279,000

0 Bedroom, 0.00 Bathroom,
Land Commercial on 0.00 Acres

Kennedale Industrial, Edmonton, AB

This 0.090-acre property is strategically located within Edmonton's Business Employment (BE) Zone, offering a versatile opportunity for light industrial, commercial, and business-related uses. The BE zoning permits a range of activities, including warehousing, manufacturing, offices, retail showrooms, service establishments, and automotive or equipment services, provided operations are fully enclosed. Ideal for entrepreneurs and investors, this property is well-suited for businesses seeking a functional space in a growing commercial-industrial district. With its flexible zoning and prime location, it presents a great opportunity for development or expansion.

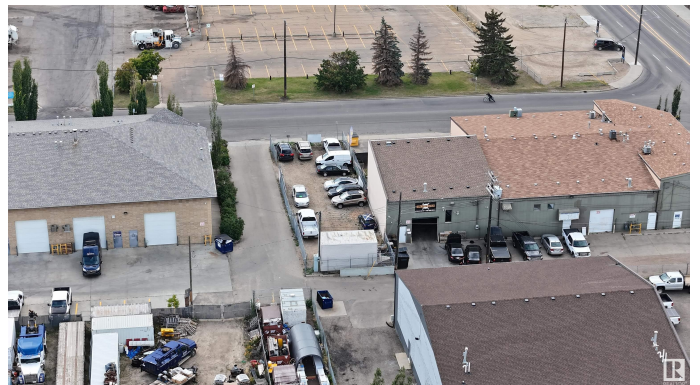
Built in 2013

Essential Information

MLS® #	E4419723
Price	\$279,000
Bathrooms	0.00
Acres	0.00
Year Built	2013
Type	Land Commercial
Status	Active

Community Information

Address 12839 58 Street



Area	Edmonton
Subdivision	Kennedale Industrial
City	Edmonton
County	ALBERTA
Province	AB
Postal Code	T5A 4X1

Additional Information

Date Listed	January 30th, 2025
Days on Market	43
Zoning	Zone 06

DATA IS DEEMED RELIABLE BUT IS NOT GUARANTEED ACCURATE BY THE REALTORS® ASSOCIATION OF EDMONTON. COPYRIGHT 2025 BY THE REALTORS® ASSOCIATION OF EDMONTON. ALL RIGHTS RESERVED. Trademarks are owned or controlled by the Canadian Real Estate Association (CREA) and identify real estate professionals who are members of CREA (REALTOR®, REALTORS®) and/or the quality of services they provide (MLS®, Multiple Listing Service®)

Listing information last updated on March 14th, 2025 at 2:47am MDT