

Courtesy Of Gerard Y Hagan Of Sterling Real Estate

# \$122,600 - 302 6204 180 Street, Edmonton

MLS® #E4418097

**\$122,600**

1 Bedroom, 1.00 Bathroom, 690 sqft  
Condo / Townhouse on 0.00 Acres

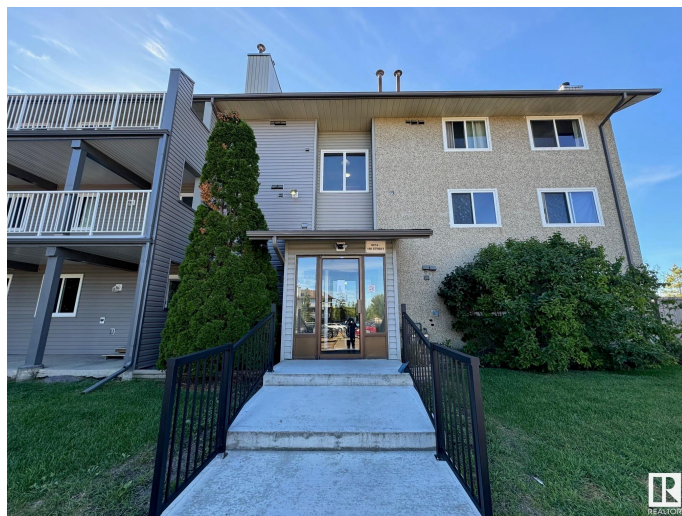
Ormsby Place, Edmonton, AB

Top floor corner unit with all the vibes! This sunny, spacious gem is your cozy retreat with a wood-burning fireplace perfect for chilly nights. The bedroom boasts a cheater door to the bathroom through a walk-in closet (fancy, right?). Whip up meals in a kitchen with stunning counters, all while gazing out big, beautiful windows. Youâ€™ve got your own furnace and hot water tankâ€™so youâ€™re the boss of your bills. Parkside Grandeâ€™s got your back (literally)â€™it backs onto lush grass fields, walking paths, and playgrounds. Stroll, jog, or just soak up the chill. Plus, you're minutes from Henday Freeway and West Edmonton Mallâ€™shopping spree, anyone?

Built in 1980

## Essential Information

MLS® #	E4418097
Price	\$122,600
Bedrooms	1
Bathrooms	1.00
Full Baths	1
Square Footage	690
Acres	0.00
Year Built	1980
Type	Condo / Townhouse
Sub-Type	Lowrise Apartment



Style Single Level Apartment  
Status Active

### Community Information

Address 302 6204 180 Street  
Area Edmonton  
Subdivision Ormsby Place  
City Edmonton  
County ALBERTA  
Province AB  
Postal Code T5T 3J9

### Amenities

Amenities On Street Parking, Closet Organizers, Detectors Smoke, Intercom, No Animal Home, No Smoking Home, Parking-Visitor  
Parking Stall

### Interior

Appliances Dishwasher-Built-In, Refrigerator, Stove-Electric  
Heating Forced Air-1, Natural Gas  
Fireplaces Brick Facing, Mantel  
# of Stories 3  
Stories 3  
Has Basement Yes  
Basement None, No Basement

### Exterior

Exterior Wood, Vinyl  
Exterior Features Backs Onto Park/Trees, Fenced, Golf Nearby, Playground Nearby, Public Transportation, Schools, Shopping Nearby, Ski Hill Nearby  
Roof Asphalt Shingles  
Construction Wood, Vinyl  
Foundation Concrete Perimeter

### Additional Information

Date Listed January 15th, 2025  
Days on Market 85  
Zoning Zone 20  
Condo Fee \$324

DATA IS DEEMED RELIABLE BUT IS NOT GUARANTEED ACCURATE BY THE REALTORS® ASSOCIATION OF EDMONTON. COPYRIGHT 2025 BY THE REALTORS® ASSOCIATION OF EDMONTON. ALL RIGHTS RESERVED. Trademarks are owned or controlled by the Canadian Real Estate Association (CREA) and identify real estate professionals who are members of CREA (REALTOR®, REALTORS®) and/or the quality of services they provide (MLS®, Multiple Listing Service®)

Listing information last updated on April 10th, 2025 at 6:47pm MDT