

Courtesy Of Brice J Laidler Of Black Sheep Realty

\$645,000 - 2615 Hanna Crescent, Edmonton

MLS® #E4417605

\$645,000

4 Bedroom, 3.50 Bathroom, 2,194 sqft

Single Family on 0.00 Acres

Haddow, Edmonton, AB

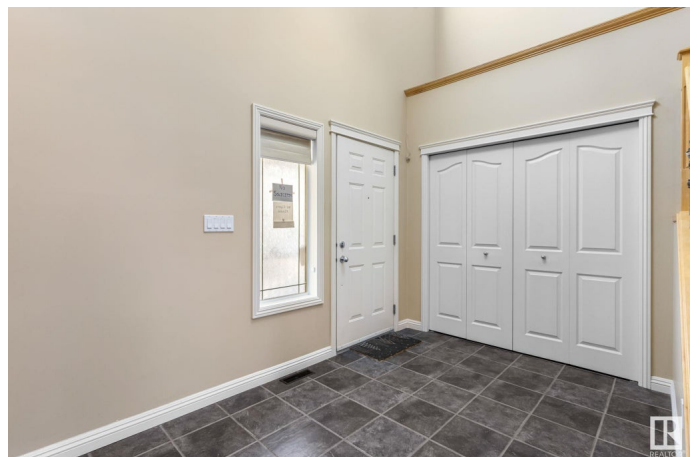
Welcome to this stunning, well-kept family home tucked away on a quiet street in Haddow, just minutes from Terwillegar Drive. With 2193 SqFt of open-concept living, 4 bedrooms, and 3.5 bathrooms, this home is designed for comfort and functionality. The impressive foyer with 17 ft ceilings leads to a flexible den or dining room and a bright living area perfect for entertaining. The kitchen shines with granite countertops, black appliances, a corner pantry, tile backsplash, and a spacious island. Upstairs, the bonus room offers a cozy space for relaxing or play. The primary suite includes a luxurious 4-piece ensuite with a soaker tub and separate shower, while two more bedrooms and a full bath complete the upper level. The finished basement features a large rec room, a fourth bedroom, a full bathroom, and an optional second laundry. Enjoy the west-facing backyard with a maintenance-free deck and storage shed. Additional highlights include A/C, gas fireplace, a mudroom, and hardwood flooring throughout

Built in 2004

Essential Information

MLS® # E4417605

Price \$645,000



Bedrooms	4
Bathrooms	3.50
Full Baths	3
Half Baths	1
Square Footage	2,194
Acres	0.00
Year Built	2004
Type	Single Family
Sub-Type	Detached Single Family
Style	2 Storey
Status	Active

Community Information

Address	2615 Hanna Crescent
Area	Edmonton
Subdivision	Haddow
City	Edmonton
County	ALBERTA
Province	AB
Postal Code	T6R 3C9

Amenities

Amenities	Air Conditioner, Closet Organizers, Deck, No Animal Home, No Smoking Home, Vinyl Windows, Vacuum System-Roughed-In
Parking	Double Garage Attached

Interior

Interior Features	ensuite bathroom
Appliances	Dishwasher-Built-In, Dryer, Refrigerator, Storage Shed, Stove-Electric, Washer, Window Coverings
Heating	Forced Air-1, Natural Gas
Fireplace	Yes
Fireplaces	Mantel, Tile Surround
Stories	3
Has Basement	Yes
Basement	Full, Finished

Exterior

Exterior	Wood, Brick, Vinyl
----------	--------------------

Exterior Features	Fenced, Golf Nearby, Landscaped, Playground Nearby, Public Transportation, Schools, Shopping Nearby
Roof	Asphalt Shingles
Construction	Wood, Brick, Vinyl
Foundation	Concrete Perimeter

Additional Information

Date Listed	January 10th, 2025
Days on Market	90
Zoning	Zone 14

DATA IS DEEMED RELIABLE BUT IS NOT GUARANTEED ACCURATE BY THE REALTORS® ASSOCIATION OF EDMONTON. COPYRIGHT 2025 BY THE REALTORS® ASSOCIATION OF EDMONTON. ALL RIGHTS RESERVED. Trademarks are owned or controlled by the Canadian Real Estate Association (CREA) and identify real estate professionals who are members of CREA (REALTOR®, REALTORS®) and/or the quality of services they provide (MLS®, Multiple Listing Service®)

Listing information last updated on April 10th, 2025 at 5:17pm MDT