

\$654,800 - 2235 194 Street, Edmonton

MLS® #E4417327

\$654,800

4 Bedroom, 3.00 Bathroom, 2,067 sqft
Single Family on 0.00 Acres

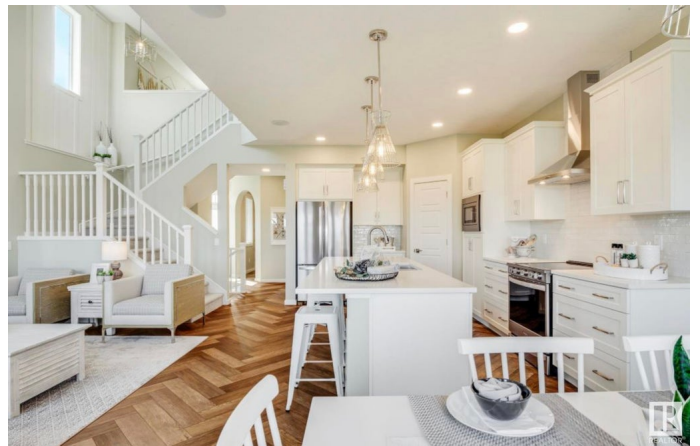
River's Edge, Edmonton, AB

Searching for your new DREAM HOME?
LOOK NO FURTHER! HOMES BY AVI is
constructing this STUNNING
"Hemsworth" model in the heart of
RIVERS EDGE. A picturesque community
filled with hiking trails, beautiful natural
scenery & nearby North Saskatchewan River.
When you need to venture elsewhere in the
city, no problem, the Anthony Henday is just
minutes away! Much desired floor plan for
today's modern family, boasting 4
spacious bedrooms, (FULL BED & BATH ON
MAIN LEVEL), open-to-below upper-level loft
style family room & full laundry room.
SEPARATE SIDE ENTRANCE for future
basement development. Welcoming foyer
transitions to open concept GREAT ROOM
that highlights magnificent window wall,
electric fireplace, pot lights & gorgeous luxury
vinyl plank flooring. Kitchen is anchored by
extended eat-on centre island, quartz
countertops, dinette nook & abundance of
cabinetry w/chimney style hood fan. Front
access double attached garage w/walk-thru
mud room-pantry-kitchen. EXCEPTIONAL
HOME built by EXCEPTIONAL BUILDER!

Built in 2025

Essential Information

MLS® # E4417327



Price	\$654,800
Bedrooms	4
Bathrooms	3.00
Full Baths	3
Square Footage	2,067
Acres	0.00
Year Built	2025
Type	Single Family
Sub-Type	Detached Single Family
Style	2 Storey
Status	Active

Community Information

Address	2235 194 Street
Area	Edmonton
Subdivision	River's Edge
City	Edmonton
County	ALBERTA
Province	AB
Postal Code	T6M 3B6

Amenities

Amenities	Ceiling 9 ft., Detectors Smoke, Hot Water Electric, Hot Wtr Tank-Energy Star, No Animal Home, No Smoking Home, Smart/Program. Thermostat, Television Connection, Vinyl Windows, HRV System
Parking Spaces	4
Parking	Double Garage Attached

Interior

Interior Features	ensuite bathroom
Appliances	Garage Control, Garage Opener, Hood Fan, Builder Appliance Credit
Heating	Forced Air-1, Natural Gas
Fireplace	Yes
Fireplaces	Insert
Stories	2
Has Basement	Yes
Basement	Full, Unfinished

Exterior

Exterior	Wood, Vinyl
Exterior Features	Golf Nearby, Playground Nearby, Schools, Shopping Nearby
Roof	Asphalt Shingles
Construction	Wood, Vinyl
Foundation	Concrete Perimeter

School Information

Elementary	CALLINGWOOD SCHOOL
Middle	HILLCREST SCHOOL
High	JASPER PLACE SCHOOL

Additional Information

Date Listed	January 8th, 2025
Days on Market	90
Zoning	Zone 57

DATA IS DEEMED RELIABLE BUT IS NOT GUARANTEED ACCURATE BY THE REALTORS® ASSOCIATION OF EDMONTON. COPYRIGHT 2025 BY THE REALTORS® ASSOCIATION OF EDMONTON. ALL RIGHTS RESERVED. Trademarks are owned or controlled by the Canadian Real Estate Association (CREA) and identify real estate professionals who are members of CREA (REALTOR®, REALTORS®) and/or the quality of services they provide (MLS®, Multiple Listing Service®)

Listing information last updated on April 8th, 2025 at 2:32pm MDT