

Courtesy Of Sharon C Ryan Of RE/MAX Elite

\$5,200,000 - Rng Rd. 31 Twp Rd. 574a, Rural Barrhead County

MLS® #E4416731

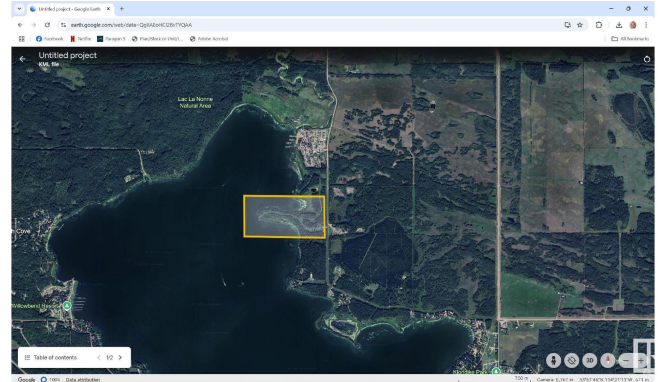
\$5,200,000

0 Bedroom, 0.00 Bathroom,
Land Commercial on 0.00 Acres

Lac La Nonne Subdivision, Rural Barrhead County, AB

DEVELOPMENT OPPORTUNITY

LAKEFRONT! This beautiful natural area is located in the northeast section of One of Alberta's best lakes - Lac La Nonne. 141 lots have been created out of 58 Acres with a large percentage LAKEFRONT! Deep Services! 11 lots have power, gas, and water to the lot line. An existing, significant well can service all 141 lots. The objectives of this community are to maximize the area of land preserved in its natural state, create a safe gated community ideal for tiny homes, recreational homes, park models, and luxury RVs. This project has been condominiumized and is zoned BRC (Bareland Condo Residential Recreational District). Permitted uses include residential, recreational, day homes, caretaker residences, park models, recreational vehicles, convenience stores, eating, and recreation. Near the City of Edmonton and St. Albert, this community will fill a high demand niche of recreational properties in a gorgeous natural setting directly on one of Alberta's most cherished lakes.



Essential Information

MLS® # E4416731

| | |
|-----------|-----------------|
| Price | \$5,200,000 |
| Bathrooms | 0.00 |
| Acres | 0.00 |
| Type | Land Commercial |
| Status | Active |

Community Information

| | |
|-------------|--------------------------|
| Address | Rng Rd. 31 Twp Rd. 574a |
| Area | Rural Barrhead County |
| Subdivision | Lac La Nonne Subdivision |
| City | Rural Barrhead County |
| County | ALBERTA |
| Province | AB |
| Postal Code | T0E 1A0 |

Additional Information

| | |
|----------------|---------------------|
| Date Listed | December 30th, 2024 |
| Days on Market | 95 |
| Zoning | Zone 72 |

DATA IS DEEMED RELIABLE BUT IS NOT GUARANTEED ACCURATE BY THE REALTORS® ASSOCIATION OF EDMONTON. COPYRIGHT 2025 BY THE REALTORS® ASSOCIATION OF EDMONTON. ALL RIGHTS RESERVED. Trademarks are owned or controlled by the Canadian Real Estate Association (CREA) and identify real estate professionals who are members of CREA (REALTOR®, REALTORS®) and/or the quality of services they provide (MLS®, Multiple Listing Service®)

Listing information last updated on April 4th, 2025 at 1:17pm MDT